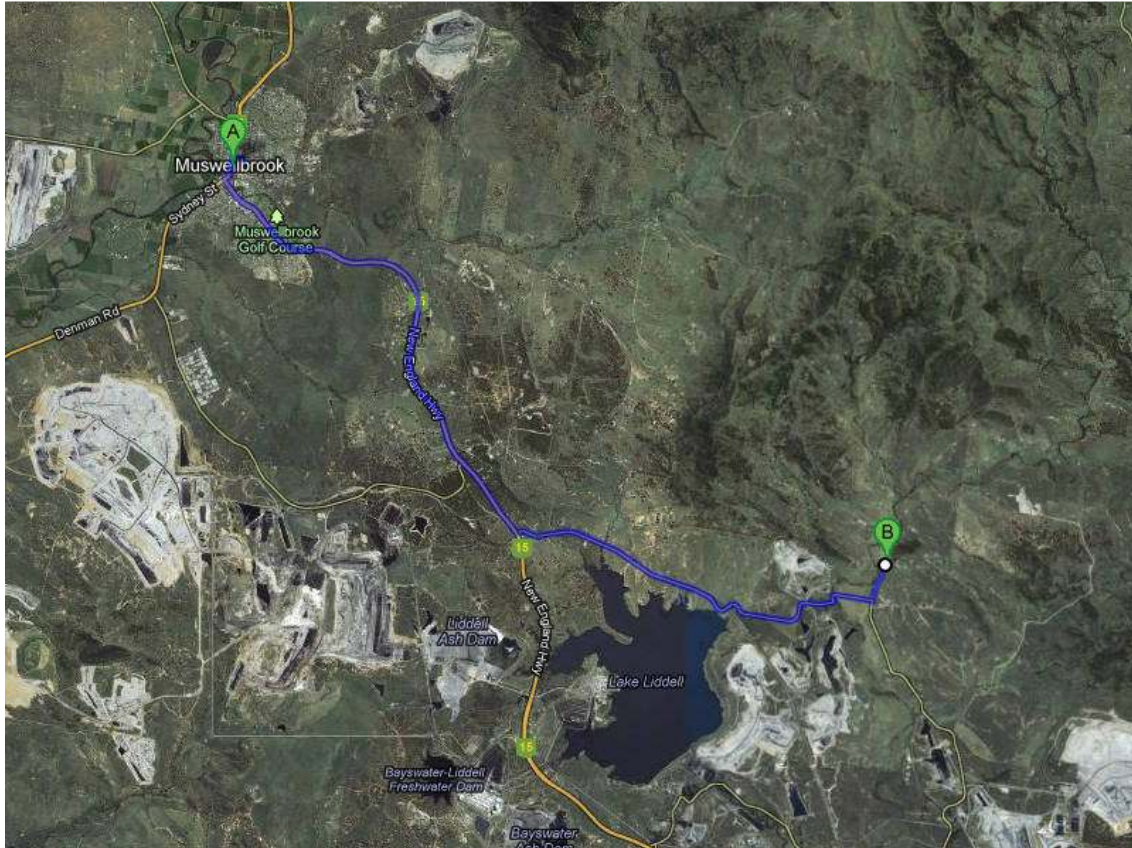


**NSW Aquaculture Association**  
**Recirculating Aquaculture Farm Field Day**  
**Hebden Fish Farm**

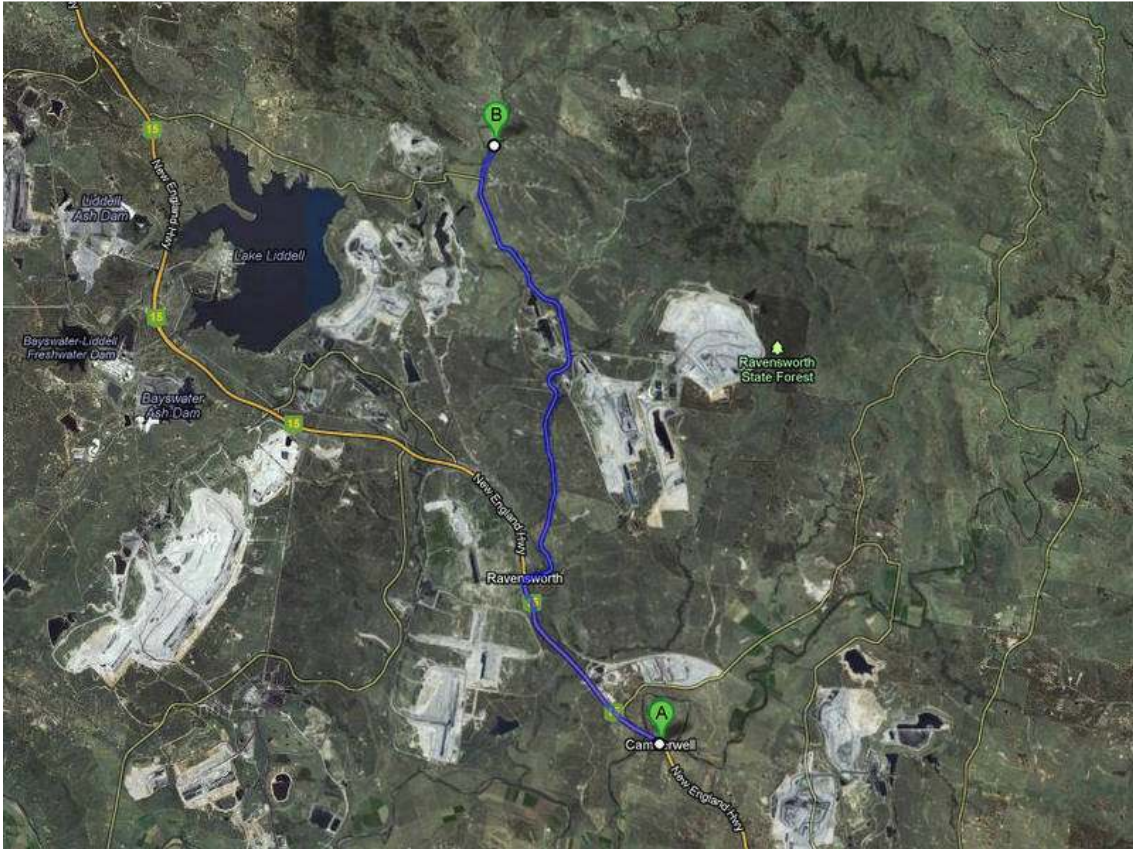


**From the North**

Muswellbrook NSW

1. Head north on New England Hwy/National Highway 15 toward Brook St - 210 m
2. Take the 1st right onto Brook St - 230 m
3. At the roundabout, take the 4th exit and stay on Brook St -290 m
4. Turn left onto New England Hwy/National Highway 15  
Go through 1 roundabout - 600 m
5. Turn left onto Maitland St/New England Hwy/National Highway 15 (signs for Singleton/New England Highway)  
Continue to follow New England Hwy/National Highway 15 - 11.8 km
6. Turn left onto Hebden Rd (signs for Antiene) - 9.3 km
7. Turn left onto Scrumlo Rd - 900 m

To: Hebden Fish Farm @-32.346277,151.047987 Some Car Navigation Gear will let you input the GPS coordinates.



From the South

Camberwell NSW

1. Head northwest on New England Hwy/National Highway 15 toward Perry St - 5.4 km
2. Turn right onto Hebden Rd - 11.5 km
3. Continue onto Scrumlo Rd - 900 m

To: Hebden Fish Farm @-32.346277,151.047987

Here is a link to Google Map of the farm location

<http://goo.gl/maps/z2BcN>

The entry to the farm is at the first sharp left hand turn about 1km along Scrumlo Road. The entry looks like this:



Mobile phone coverage may be a little ordinary out that way so please make any arrangements to get there as far as maps and gps prior to leaving. We may not be able to assist you if you are not able to find the property once we are there.

I look forward to seeing you all there.

Regards

Paul Van der Werf

Presiden 2012

NSW Aquaculture Association